

Performance Report for: <http://shtorkin.xyz/>

Report generated: Tue, Dec 3, 2024 11:34 AM -0800
 Test Server Location: Vancouver, Canada
 Using: Chrome 117.0.0.0, Lighthouse 11.0.0

D	Performance	Structure	L. Contentful Paint	T. Blocking Time	C. Layout Shift
	55%	86%	8.9s	53ms	0

Top Issues

Med-High	Avoid chaining critical requests <small>LCP</small> <small>FCP</small>	51 chains found
Med	Use a Content Delivery Network (CDN)	79 resources found
Med	Serve static assets with an efficient cache policy	Potential savings of 579KB
Med	Avoid enormous network payloads <small>LCP</small>	Total size was 3.46MB
Low	Avoid an excessive DOM size <small>TBT</small>	912 elements

Focus on these audits first

These audits likely have the largest impact on your page performance.

Structure audits do not directly affect your Performance Score, but improving the audits seen here can help as a starting point for overall performance gains.

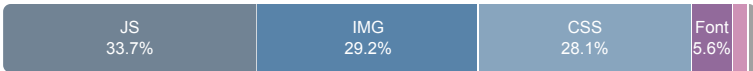
Page Details



Total Page Size - 3.46MB



Total Page Requests - 89



HTML JS CSS IMG Video Font Other

How does this affect me?

Modern web users have a short attention span and expect a fast and seamless website experience. Delivering that fast experience can result in more traffic, more conversions, and more happiness.

As if you didn't need more incentive, **Google use Page Speed and Page Experience (including Web Vitals) signals in their ranking algorithm.**

About GTmetrix

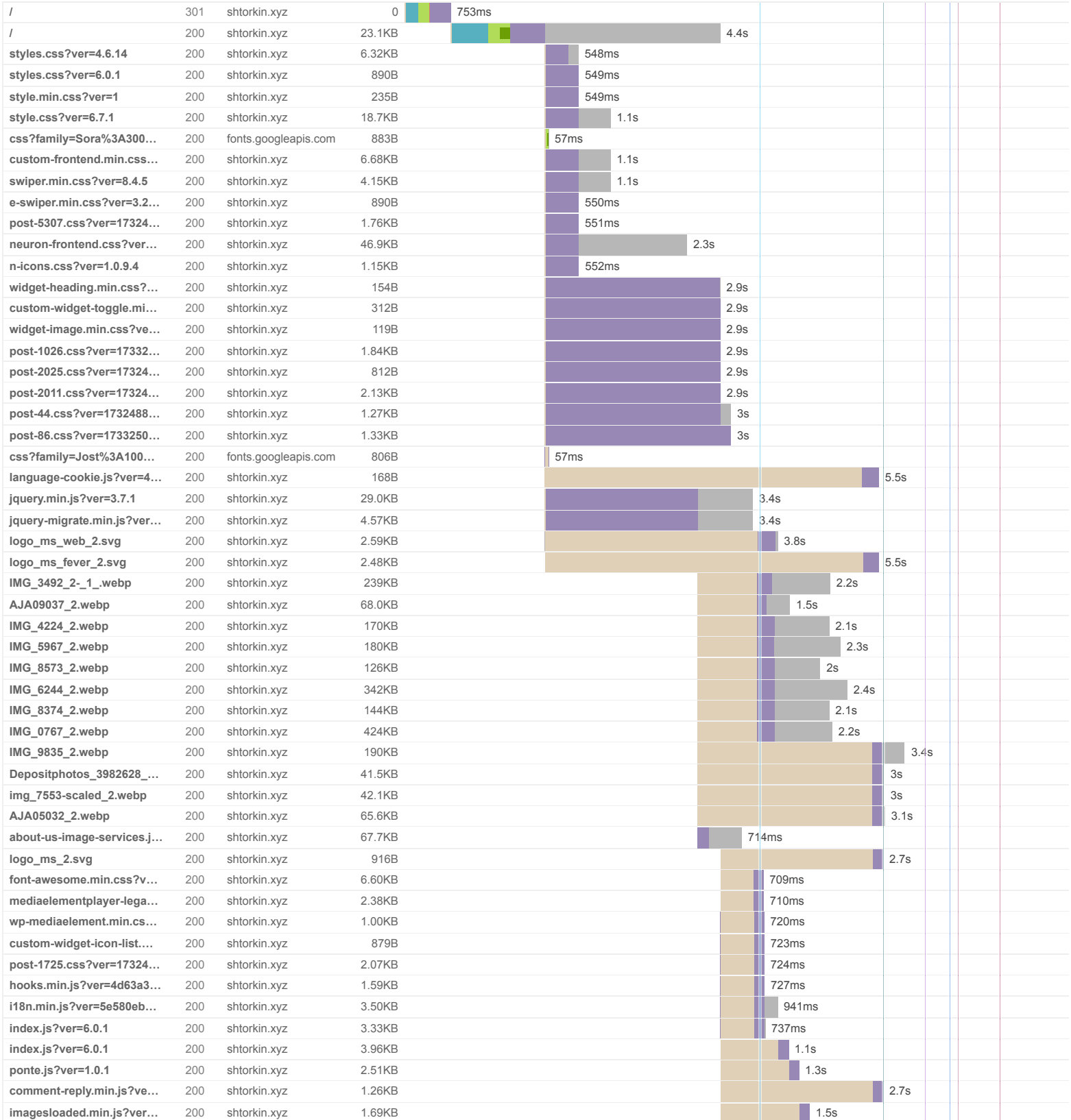
GTmetrix was developed as a tool for customers to easily test the performance of their webpages.



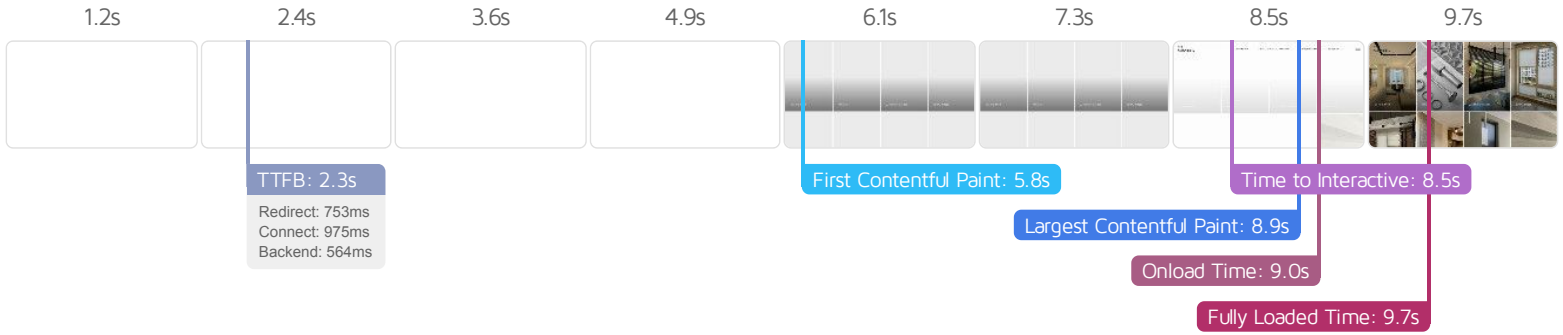
[Learn more about us.](#)

The waterfall chart displays the loading behaviour of your site in your selected browser. It can be used to discover simple issues such as 404's or more complex issues such as external resources blocking page rendering.

Шторы и жалюзи в Кишиневе, Молдова - MR.SHTORKIN



underscore.min.js?ver=1...	200	shtorkin.xyz	7.07KB					1.6s			
wp-util.min.js?ver=6.7.1	200	shtorkin.xyz	756B					1.8s			
packery.js?ver=1.0.9.4	200	shtorkin.xyz	9.33KB					2s			
object-fit.js?ver=1.0.9.4	200	shtorkin.xyz	2.38KB					2.1s			
typed.js?ver=1.0.9.4	200	shtorkin.xyz	4.05KB					2.3s			
mediaelement-and-player...	200	shtorkin.xyz	35.6KB					2.2s			
mediaelement-migrate.mi...	200	shtorkin.xyz	522B					2.2s			
wp-mediaelement.min.js?...	200	shtorkin.xyz	496B					2.2s			
vimeo.min.js?ver=4.2.17	200	shtorkin.xyz	2.06KB					2.3s			
sticky.js?ver=1.0.9.4	200	shtorkin.xyz	2.11KB					2.5s			
webpack.runtime.min.js?...	200	shtorkin.xyz	2.17KB					2.5s			
frontend-modules.min.js?...	200	shtorkin.xyz	15.1KB					2.5s			
frontend.js?ver=1.0.9.4	200	shtorkin.xyz	6.35KB					2.3s			
elements.js?ver=1.0.9.4	200	shtorkin.xyz	57.9KB					2.6s			
core.min.js?ver=1.13.3	200	shtorkin.xyz	6.69KB					2.6s			
frontend.min.js?ver=3.25.10	200	shtorkin.xyz	12.7KB					2.6s			
92zatBhPNqw73oDd4iYl...	200	fonts.gstatic.com	9.9KB					74ms			
neuron-icons.woff274931...	200	shtorkin.xyz	11.8KB					321ms			
92zatBhPNqw73oTd4g.w...	200	fonts.gstatic.com	26.0KB					71ms			
92zUtBhPNqw73oHt4D4h...	200	fonts.gstatic.com	30.0KB					66ms			
xMQbuFFYT72XzQUpDg....	200	fonts.gstatic.com	32.8KB					1.9s			
IMG_0773-768x1024.jpg	200	shtorkin.xyz	74.5KB					2.3s			
IMG_0625-768x1024.jpg	200	shtorkin.xyz	93.8KB					2.1s			
IMG_5467-768x1024.jpg	200	shtorkin.xyz	84.1KB					2.3s			
wp-emoji-release.min.js?...	200	shtorkin.xyz	4.63KB					172ms			
dialog.min.js?ver=4.9.3	200	shtorkin.xyz	3.45KB					173ms			
toggle.31881477c45ff5cf9...	200	shtorkin.xyz	1.31KB					171ms			
swiper.min.js?ver=8.4.5	200	shtorkin.xyz	37.3KB					501ms			
IMG_0782-768x1024.jpg	200	shtorkin.xyz	94.7KB					190ms			
IMG_0789-768x1024.jpg	200	shtorkin.xyz	106KB					580ms			
IMG_1080-768x1024.jpg	200	shtorkin.xyz	90.7KB					241ms			
IMG_9996-768x1024.jpg	200	shtorkin.xyz	114KB					240ms			
IMG_0515_edited-1024x8...	200	shtorkin.xyz	95.8KB					240ms			
IMG_1880-1024x768.jpg	200	shtorkin.xyz	84.3KB					239ms			
IMG_1835-768x1024.jpg	200	shtorkin.xyz	89.4KB					239ms			
favicon.svg	200	shtorkin.xyz	1.58KB					689ms			
89 Requests 3.46MB (4.97MB Uncompressed) Fully Loaded 9.7s (Onload 9s)											



Performance Metrics

<p>First Contentful Paint</p> <p>How quickly content like text or images are painted onto your page. A good user experience is 0.9s or less.</p>	<p>Much longer than recommended</p> <p>5.8s</p>	<p>Time to Interactive</p> <p>How long it takes for your page to become fully interactive. A good user experience is 2.5s or less.</p>	<p>Much longer than recommended</p> <p>8.5s</p>
<p>Speed Index</p> <p>How quickly the contents of your page are visibly populated. A good user experience is 1.3s or less.</p>	<p>Much longer than recommended</p> <p>8.1s</p>	<p>Total Blocking Time</p> <p>How much time is blocked by scripts during your page loading process. A good user experience is 150ms or less.</p>	<p>Good - Nothing to do here</p> <p>53ms</p>
<p>Largest Contentful Paint</p> <p>How long it takes for the largest element of content (i.e., a hero image) to be painted on your page. A good user experience is 1.2s or less.</p>	<p>Much longer than recommended</p> <p>8.9s</p>	<p>Cumulative Layout Shift</p> <p>How much your page's layout shifts as it loads. A good user experience is a score of 0.1 or less.</p>	<p>Good - Nothing to do here</p> <p>0</p>

Browser Timings

Redirect	753ms	Connect	975ms	Backend	564ms
TTFB	2.3s	First Paint	5.8s	DOM Int.	7.8s
DOM Loaded	7.8s	Onload	9.0s	Fully Loaded	9.7s

IMPACT	AUDIT	
Med-High	Avoid chaining critical requests <small>FCP LCP</small>	51 chains found
Med	Use a Content Delivery Network (CDN)	79 resources found
Med	Serve static assets with an efficient cache policy	Potential savings of 579KB
Med	Avoid enormous network payloads <small>LCP</small>	Total size was 3.46MB
Low	Avoid an excessive DOM size <small>TBT</small>	912 elements
Low	Avoid long main-thread tasks <small>TBT</small>	1 long task found
Low	Reduce unused JavaScript <small>LCP</small>	Potential savings of 78.2KB
Low	Avoid multiple page redirects <small>FCP LCP</small>	Potential savings of 754ms
Low	Minify CSS <small>FCP LCP</small>	Potential savings of 22.7KB
Low	Ensure text remains visible during webfont load <small>FCP LCP</small>	1 font found
Low	Properly size images	Potential savings of 2.68MB
Low	Defer offscreen images	Potential savings of 2.48KB
Low	Reduce unused CSS <small>FCP LCP</small>	Potential savings of 63.8KB
Low	Avoid non-composited animations <small>CLS</small>	5 animated elements found
Low	Reduce initial server response time <small>FCP LCP</small>	Root document took 563ms
Low	Reduce JavaScript execution time <small>TBT</small>	176ms spent executing JavaScript
Low	Serve images in next-gen formats	Potential savings of 375KB
N/A	Eliminate render-blocking resources <small>FCP LCP</small>	Potential savings of 0 ms
N/A	Largest Contentful Paint element <small>LCP</small>	8,900 ms
N/A	Avoid serving legacy JavaScript to modern browsers <small>TBT</small>	Potential savings of 251B
N/A	Reduce the impact of third-party code <small>TBT</small>	Total size was 101KB
N/A	Minimize main-thread work <small>TBT</small>	Main-thread busy for 821ms
N/A	Avoid large layout shifts <small>CLS</small>	

