

Performance Report for: <https://shtorkin.com/new/>

Report generated: Wed, Nov 27, 2024 3:47 PM -0800
 Test Server Location: Vancouver, Canada
 Using: Chrome 117.0.0.0, Lighthouse 11.0.0

D	Performance 60%	Structure 69%	L. Contentful Paint 4.6s	T. Blocking Time 124ms	C. Layout Shift 0
---	---------------------------	-------------------------	------------------------------------	----------------------------------	-----------------------------

Top Issues

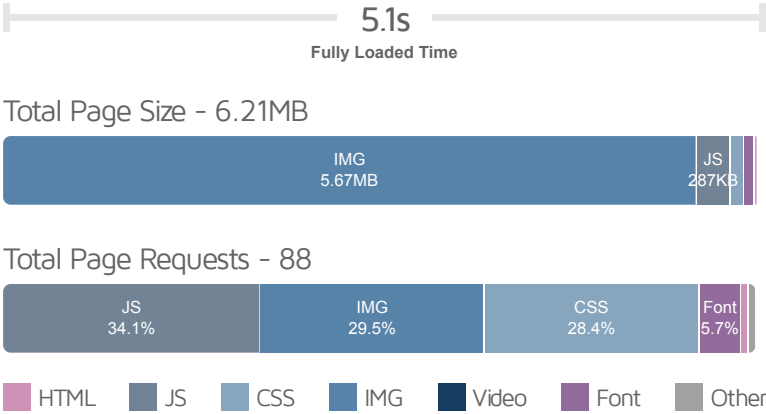
High	Eliminate render-blocking resources <small>FCP</small> <small>LCP</small>	Potential savings of 2.0s
High	Avoid enormous network payloads <small>LCP</small>	Total size was 6.21MB
Med-High	Properly size images	Potential savings of 5.42MB
Med	Use a Content Delivery Network (CDN)	79 resources found
Med	Serve static assets with an efficient cache policy	Potential savings of 432KB

Focus on these audits first

These audits likely have the largest impact on your page performance.

Structure audits do not directly affect your Performance Score, but improving the audits seen here can help as a starting point for overall performance gains.

Page Details



How does this affect me?

Modern web users have a short attention span and expect a fast and seamless website experience. Delivering that fast experience can result in more traffic, more conversions, and more happiness.

As if you didn't need more incentive, **Google use Page Speed and Page Experience (including Web Vitals) signals in their ranking algorithm.**

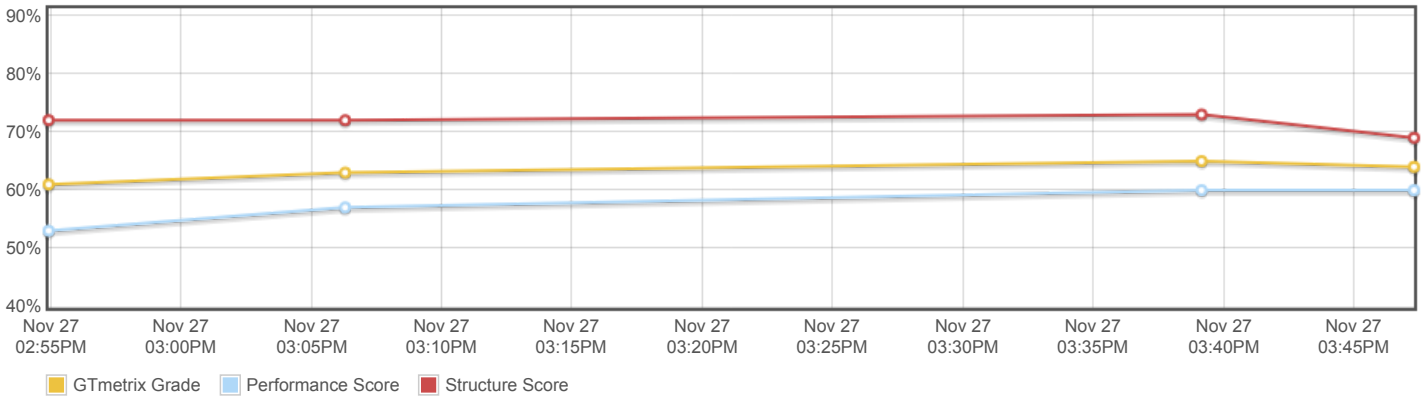
About GTmetrix

GTmetrix was developed as a tool for customers to easily test the performance of their webpages.

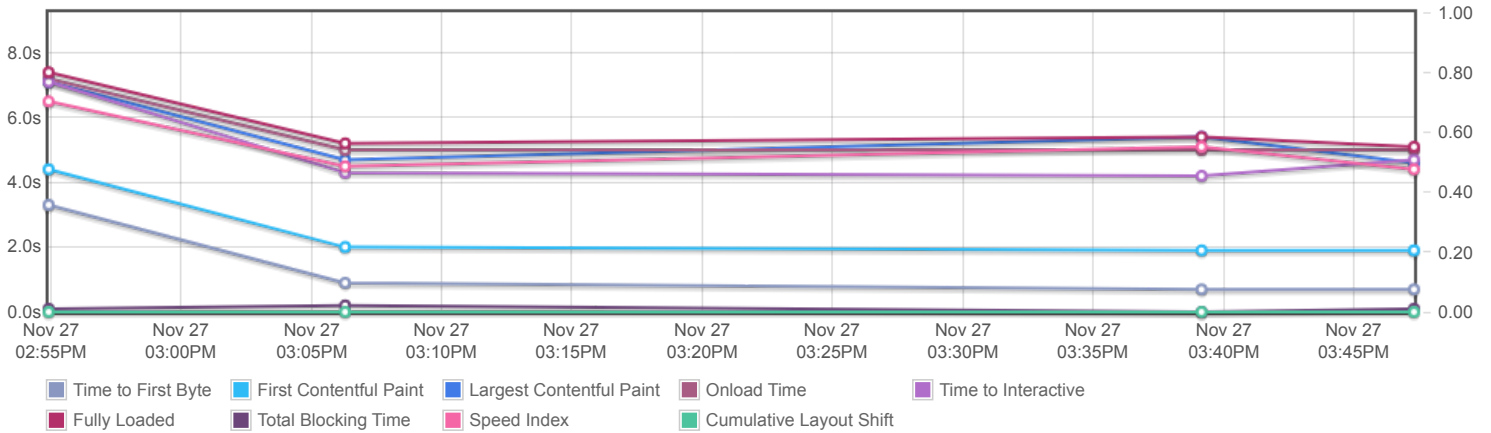


[Learn more about us.](#)

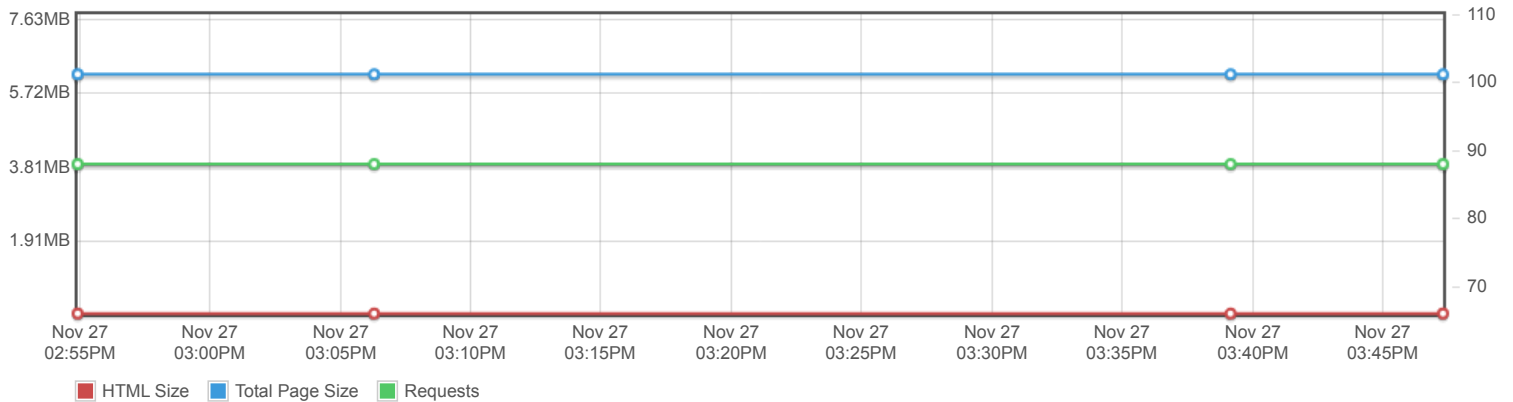
Page scores



Page metrics

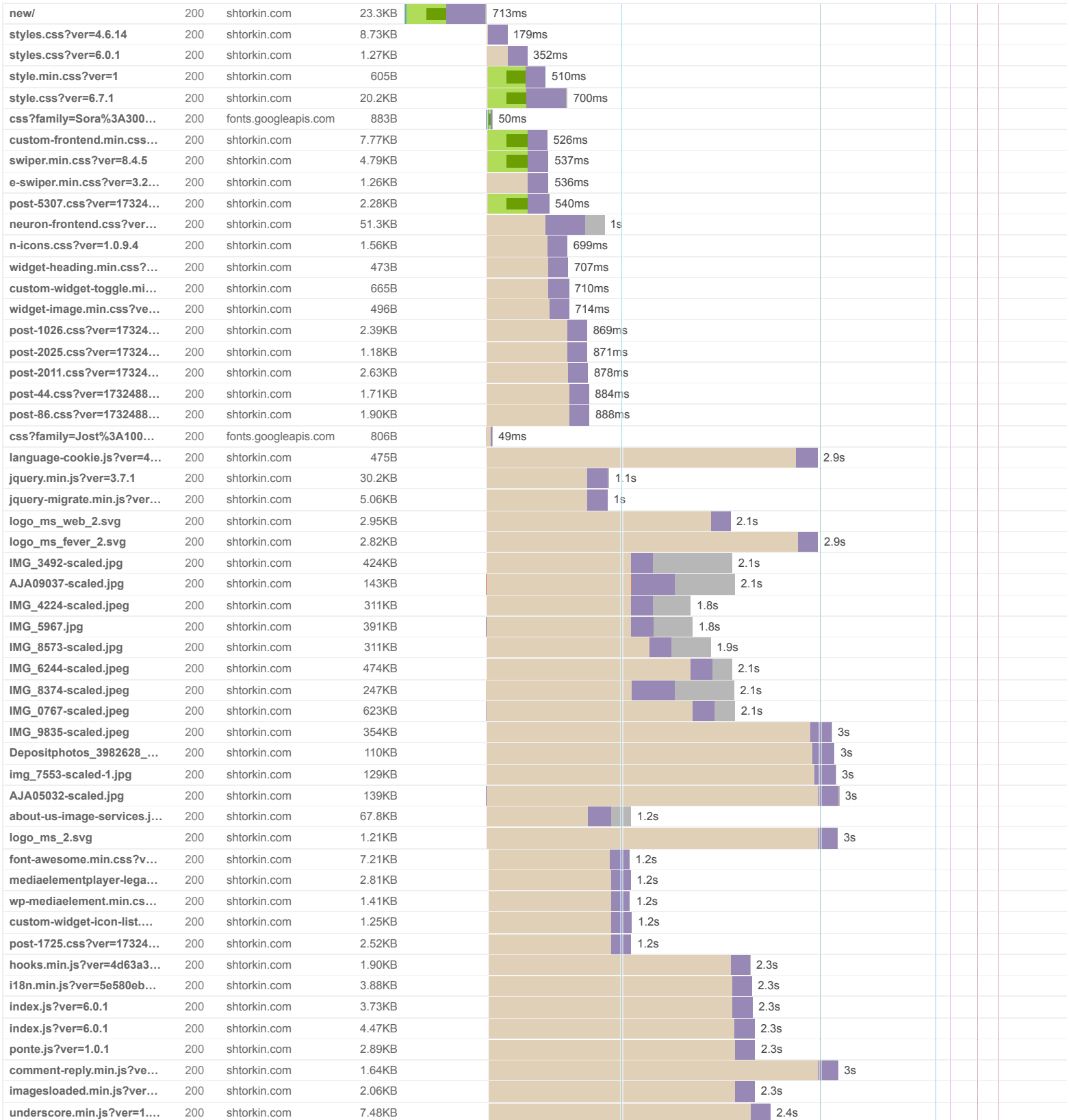


Page sizes and request counts

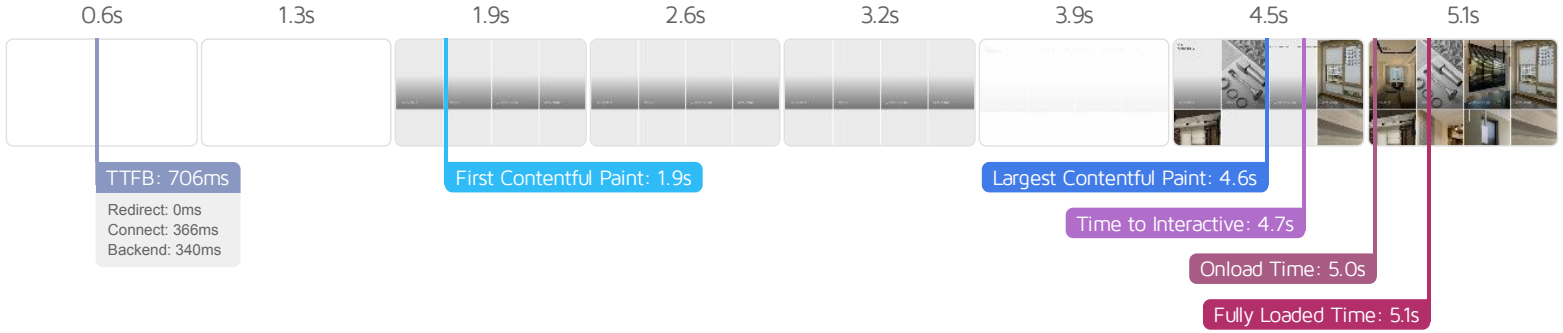


The waterfall chart displays the loading behaviour of your site in your selected browser. It can be used to discover simple issues such as 404's or more complex issues such as external resources blocking page rendering.

Шторы и жалюзи в Кишиневе, Молдова - MR.SHTORKIN



wp-util.min.js?ver=6.7.1	200	shtorkin.com	1.03KB				2.4s			
packery.js?ver=1.0.9.4	200	shtorkin.com	10.0KB				2.5s			
object-fit.js?ver=1.0.9.4	200	shtorkin.com	2.87KB				2.5s			
typed.js?ver=1.0.9.4	200	shtorkin.com	4.62KB				2.5s			
mediaelement-and-player...	200	shtorkin.com	38.7KB				2.5s			
mediaelement-migrate.mi...	200	shtorkin.com	840B				2.6s			
wp-mediaelement.min.js?...	200	shtorkin.com	838B				2.6s			
vimeo.min.js?ver=4.2.17	200	shtorkin.com	2.53KB				2.6s			
sticky.js?ver=1.0.9.4	200	shtorkin.com	2.49KB				2.6s			
webpack.runtime.min.js?...	200	shtorkin.com	2.58KB				2.7s			
frontend-modules.min.js?...	200	shtorkin.com	15.9KB				2.7s			
frontend.js?ver=1.0.9.4	200	shtorkin.com	7.15KB				2.8s			
elements.js?ver=1.0.9.4	200	shtorkin.com	62.9KB				2.8s			
core.min.js?ver=1.13.3	200	shtorkin.com	7.25KB				2.8s			
frontend.min.js?ver=3.25.10	200	shtorkin.com	13.3KB				2.8s			
92zatBhPNqw73oDd4iYl...	200	fonts.gstatic.com	9.9KB			75ms				
neuron-icons.woff2?4931...	200	shtorkin.com	12.0KB			316ms				
92zatBhPNqw73oTd4g.w...	200	fonts.gstatic.com	26.0KB			82ms				
92zUtBhPNqw73oHt4D4h...	200	fonts.gstatic.com	30.0KB			68ms				
xMQbuFFYT72XzQUpDg....	200	fonts.gstatic.com	32.8KB			54ms				
wp-emoji-release.min.js?...	200	shtorkin.com	5.31KB				286ms			
dialog.min.js?ver=4.9.3	200	shtorkin.com	3.90KB				288ms			
toggle.31881477c45ff5cf9...	200	shtorkin.com	1.66KB				259ms			
swiper.min.js?ver=8.4.5	200	shtorkin.com	39.5KB				289ms			
portfolio-item-14-image-1....	200	shtorkin.com	76.6KB				204ms			
IMG_8579-1536x1152.jpg	200	shtorkin.com	128KB				377ms			
IMG_0782-1536x2048.jpg	200	shtorkin.com	224KB				526ms			
IMG_1572-1536x1152.jpg	200	shtorkin.com	262KB				750ms			
IMG_9231-1536x2048.jpg	200	shtorkin.com	254KB				373ms			
IMG_3463-1536x2048.jpg	200	shtorkin.com	172KB				893ms			
IMG_0599-1536x2048.jpg	200	shtorkin.com	224KB				399ms			
IMG_1075-1536x2048.jpg	200	shtorkin.com	144KB				560ms			
IMG_5766-1536x2048.jpg	200	shtorkin.com	258KB				572ms			
IMG_4165-1536x2048.jpg	200	shtorkin.com	333KB				765ms			
favicon.svg	200	shtorkin.com	1.88KB							176ms
88 Requests 6.21MB (7.67MB Uncompressed) Fully Loaded 5.1s (Onload 5s)										



Performance Metrics

<p>First Contentful Paint</p> <p>How quickly content like text or images are painted onto your page. A good user experience is 0.9s or less.</p>	<p>Much longer than recommended</p> <p>1.9s</p>	<p>Time to Interactive</p> <p>How long it takes for your page to become fully interactive. A good user experience is 2.5s or less.</p>	<p>Much longer than recommended</p> <p>4.7s</p>
<p>Speed Index</p> <p>How quickly the contents of your page are visibly populated. A good user experience is 1.3s or less.</p>	<p>Much longer than recommended</p> <p>4.4s</p>	<p>Total Blocking Time</p> <p>How much time is blocked by scripts during your page loading process. A good user experience is 150ms or less.</p>	<p>Good - Nothing to do here</p> <p>124ms</p>
<p>Largest Contentful Paint</p> <p>How long it takes for the largest element of content (i.e., a hero image) to be painted on your page. A good user experience is 1.2s or less.</p>	<p>Much longer than recommended</p> <p>4.6s</p>	<p>Cumulative Layout Shift</p> <p>How much your page's layout shifts as it loads. A good user experience is a score of 0.1 or less.</p>	<p>Good - Nothing to do here</p> <p>0</p>

Browser Timings

Redirect	0ms	Connect	366ms	Backend	340ms
TTFB	706ms	First Paint	1.9s	DOM Int.	3.6s
DOM Loaded	3.6s	Onload	5.0s	Fully Loaded	5.1s

IMPACT	AUDIT	
High	Eliminate render-blocking resources <small>FCP LCP</small>	Potential savings of 2.0s
High	Avoid enormous network payloads <small>LCP</small>	Total size was 6.21MB
Med-High	Properly size images	Potential savings of 5.42MB
Med	Use a Content Delivery Network (CDN)	79 resources found
Med	Serve static assets with an efficient cache policy	Potential savings of 432KB
Med-Low	Use HTTP/2 for all resources	Potential savings of 1.8s
Med-Low	Avoid chaining critical requests <small>FCP LCP</small>	51 chains found
Low	Avoid an excessive DOM size <small>TBT</small>	912 elements
Low	Avoid long main-thread tasks <small>TBT</small>	3 long tasks found
Low	Minify CSS <small>FCP LCP</small>	Potential savings of 24.8KB
Low	Reduce unused CSS <small>FCP LCP</small>	Potential savings of 69.4KB
Low	Serve images in next-gen formats	Potential savings of 493KB
Low	Ensure text remains visible during webfont load <small>FCP LCP</small>	1 font found
Low	Reduce unused JavaScript <small>LCP</small>	Potential savings of 84.3KB
Low	Minify JavaScript <small>FCP LCP</small>	Potential savings of 2.26KB
Low	Reduce initial server response time <small>FCP LCP</small>	Root document took 339ms
Low	Reduce JavaScript execution time <small>TBT</small>	260ms spent executing JavaScript
Low	Avoid non-composited animations <small>CLS</small>	5 animated elements found
Low	Defer offscreen images	Potential savings of 2.82KB
N/A	Minimize main-thread work <small>TBT</small>	Main-thread busy for 1.0s
N/A	Reduce the impact of third-party code <small>TBT</small>	Total size was 101KB
N/A	Avoid serving legacy JavaScript to modern browsers <small>TBT</small>	Potential savings of 277B
N/A	Largest Contentful Paint element <small>LCP</small>	4,600 ms

N/A

Avoid large layout shifts CLS

N/A

User Timing marks and measures